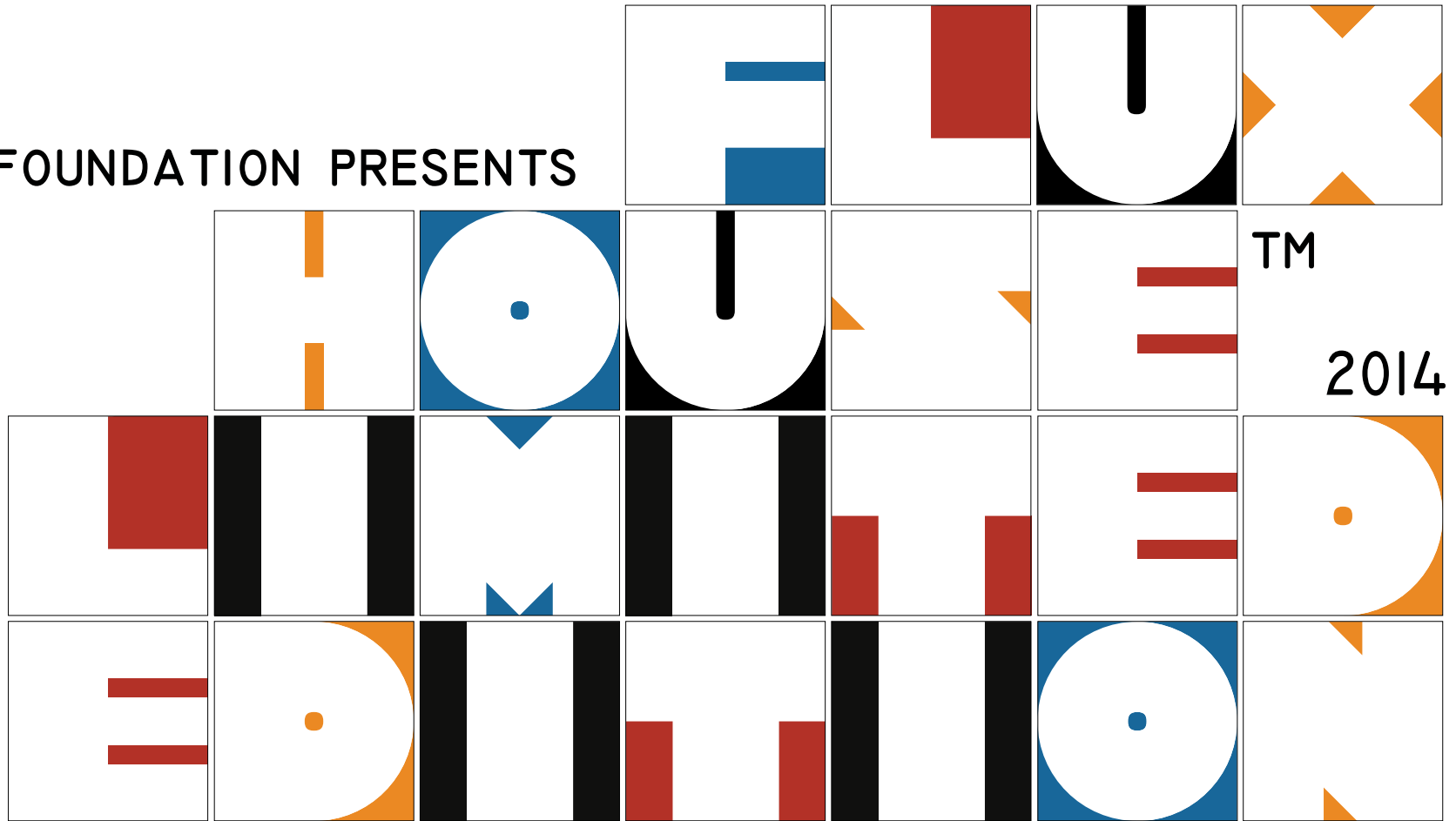


FLUXUS FOUNDATION PRESENTS



FLUXHOUSE™ LIMITED EDITION

January 16th - March 22nd, 2014

Fluxus Foundation is pleased to announce FLUXHOUSE™ LIMITED EDITION in the foundation exhibition space at 454 W 19th St. New York, NY 10011.

Consonant with **George Maciunas'** view, *'homemaking is the greatest art'*, Fluxhouse is testament to the notion of creating a home and not simply a house.

Invented by visionary architect and inventor **George Maciunas** in 1965, the 1,900 ft² (176.5m²) Fluxhouse is an **eco-friendly design** that is resistant to natural disasters including fires, floods, earthquakes and hurricanes. **Multi-functional and cost-efficient**, Fluxhouse demonstrates an ideology which values organic usage over visual theatrics as a housing system designed to be **sustainable in its production, construction, and use**.

After five years' research and development of George Maciunas' Fluxhouse as an **innovative modular building system** that allows for **contemporary way of living**, the Fluxus Foundation is **releasing up to 5 licenses to build limited editions of Fluxhouse in the year of 2014**, with updated engineering design and architectural consulting throughout the building process.

Fluxhouse consists of nine structural components, sliding nonstructural interior walls, and a service cubicle containing plumbing, heating, and kitchen appliances. A series of spaces including living and dining area, study room, bedroom, children's room, kitchen and bathroom, unfold in a continuous loop around a lively internal courtyard. An abundance of natural sunlight is provided by the wall-height windows and the off-center zen courtyard. The design is also intended to give developers and occupants **considerable flexibility in customizing the space** to various functions.

FLUXHOUSE™ LIMITED EDITION is curated by **Harry Stendhal**, Chairman of Fluxus Foundation, New York, and **Fanyu Lin**, Master of Science in Advanced Architectural Design, Graduate School of Architecture, Planning and Preservation in Columbia University.

Special thanks to Scott Weinkle Architect and Todocad.

The exhibition is on display from **January 16th - March 22nd, 2014**. Hours: Tuesday - Saturday, 11 am - 5 pm.

For more information regarding **detailed instruction, price and workflow of licensing Fluxhouse Limited Edition**, please contact: info@fluxusfoundation.com | fluxusfoundation.com | 212-675-4392
454 W 19th St. New York, NY 10011.

1. **George Maciunas** : American artist George Maciunas (1931-1978) is best known as the founder and central coordinator of Fluxus from 1962 until his untimely death in 1978. Fluxus was a global collective of artists, musicians, designers bound by their intermedia sensibility and experimental enlightenment. John Cage, John Lennon, Yoko Ono, Nam June Paik, George Brecht, Larry Miller, Vytautas Landsbergis, Ben Patterson, Ken Friedman, Alison Knowles, Henry Flynt, Mieko Shiomi, Ben Vautier, Emmett Williams, and Joseph Beuys were among its members.

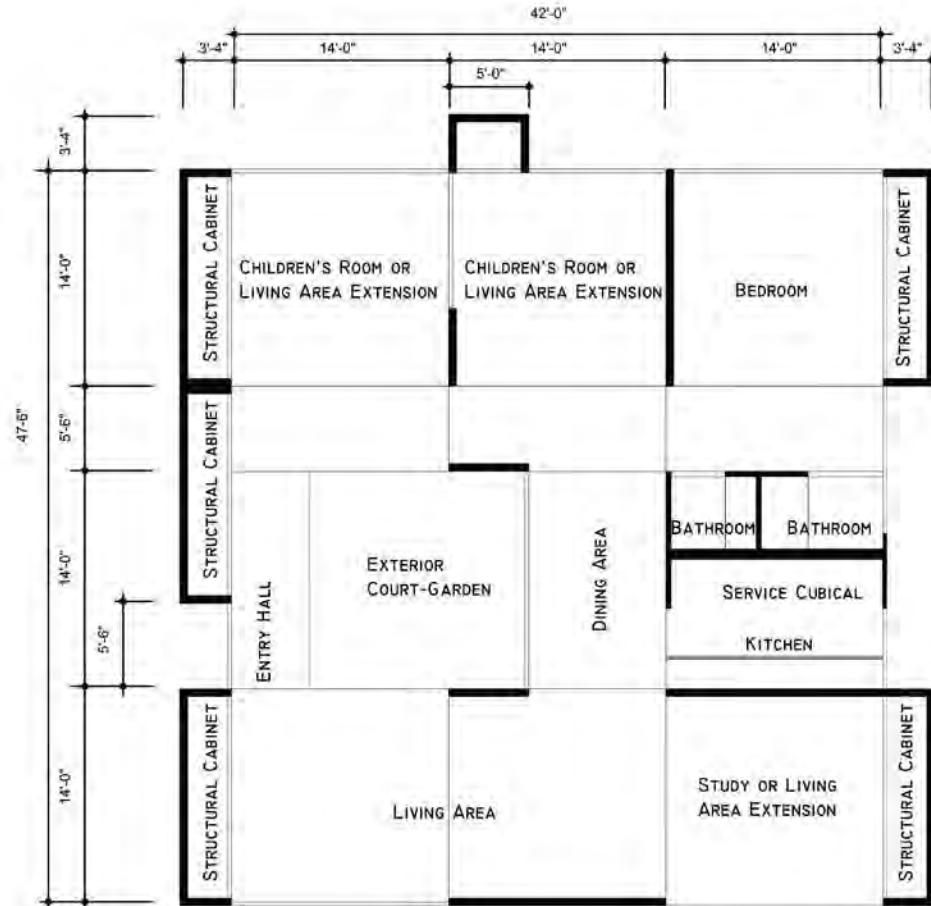
George Maciunas was awarded with architectural degrees from Cooper Union (1952) and Pittsburgh's Carnegie Institute of Technology (1954). After graduating, he worked for several major firms, including Skidmore, Owing and Merrill (1955-57), the highly regarded designers Knoll Associates (1960-61) (interior design, interior graphics, exhibits, displays, structures), and Olin Mathieson (1957-1960) (R&D Aluminum div product development and design) where he is credited with the invention of a structural framework useful in construction of prefabricated buildings using extruded aluminum beams and columns. Furthermore, George Maciunas received a patent for the innovative modular building system in 1961. Maciunas Prefabricated Building System design was completed and copyrighted in 1965 as an invention which can be used to build a single family house, highrise building, or an entire city (Fluxcity™).

Maciunas' work has been exhibited in many of the major museums around the world with archives held in The Whitney Museum of American Art, The Walker Art Center in Minneapolis, The Getty Research Institute, and Staatsgalerie Stuttgart. Recently acquired from the Gilbert and Lila Silverman Fluxus Collection, The Museum of Modern Art currently holds the largest collection of Maciunas and Fluxus works of 10,000 items. As part of a touring exhibition organized by Dartmouth College, Maciunas' work was most recently featured in 'Fluxus and the Essential Questions of Life' at New York University's Grey Gallery in fall 2011 and University of Michigan's Museum of Art in spring 2012.

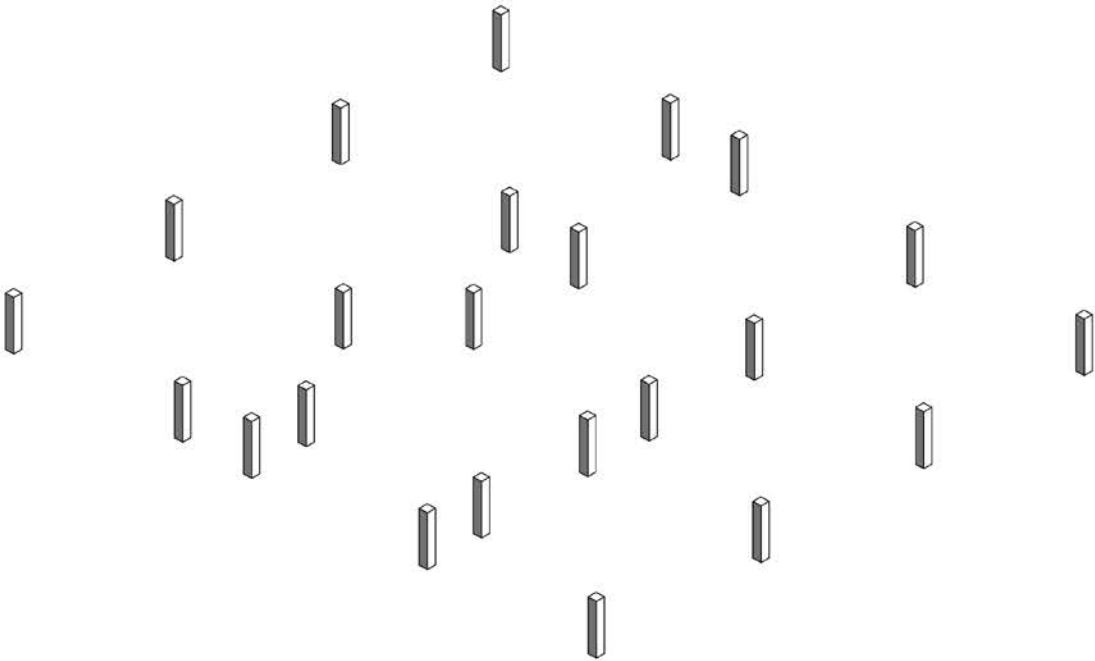


FLOOR PLAN

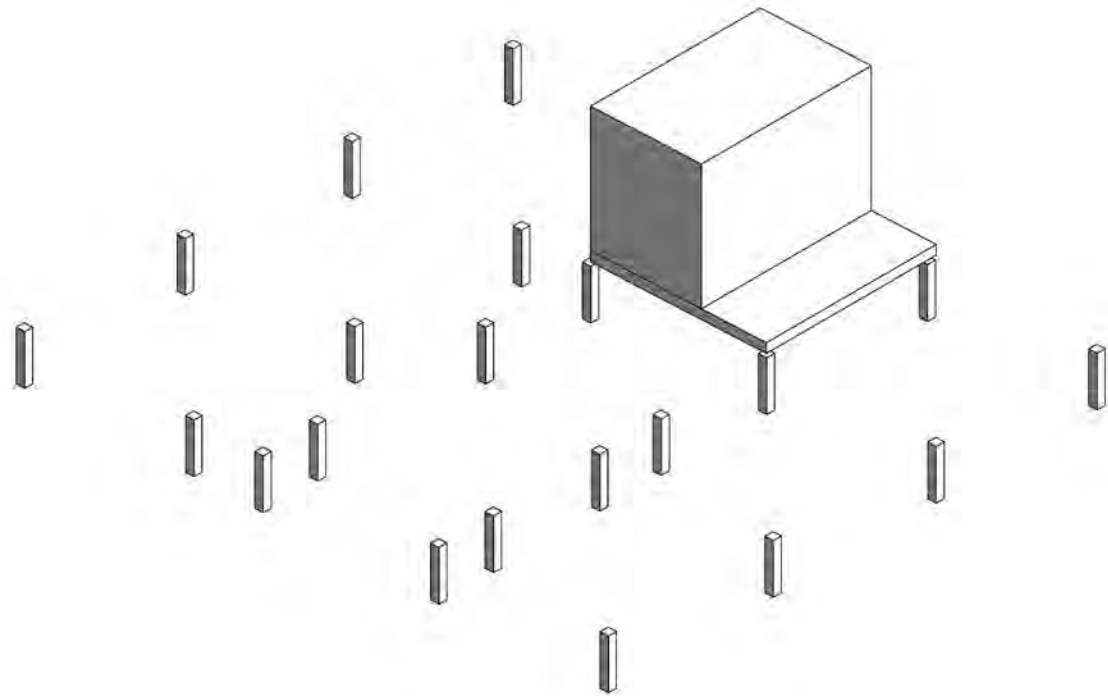
1900.00 SQUARE FEET
 176.52 SQUARE METERS



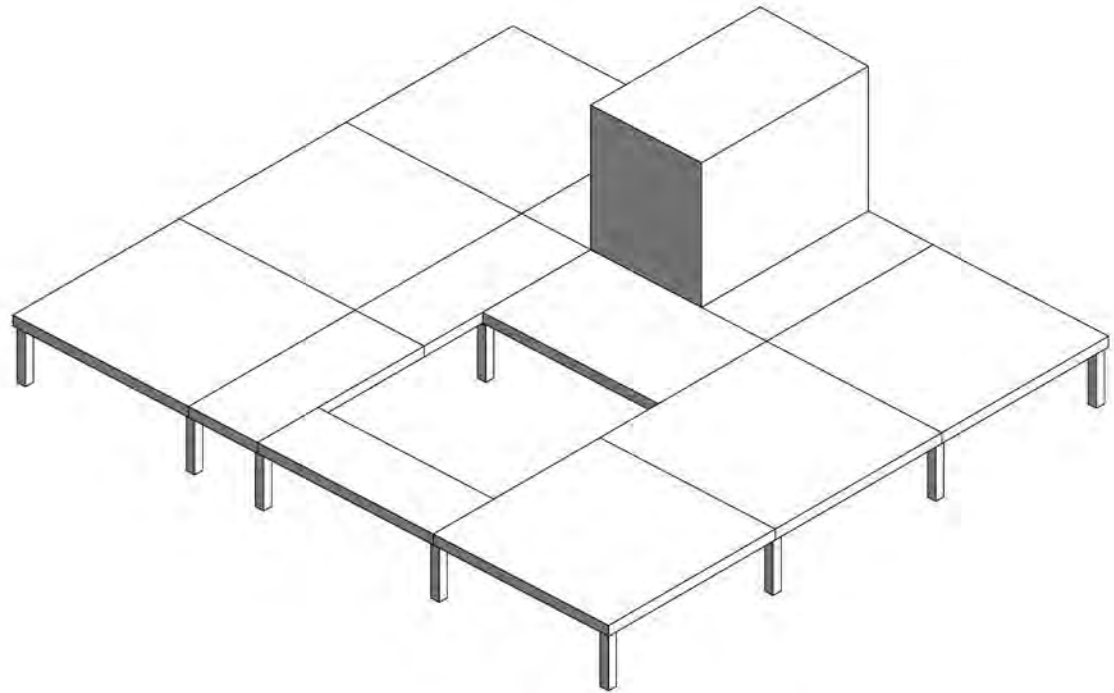
PRECAST CONCRETE PILES ARE
INSERTED INTO PREDRILLED
HOLES.



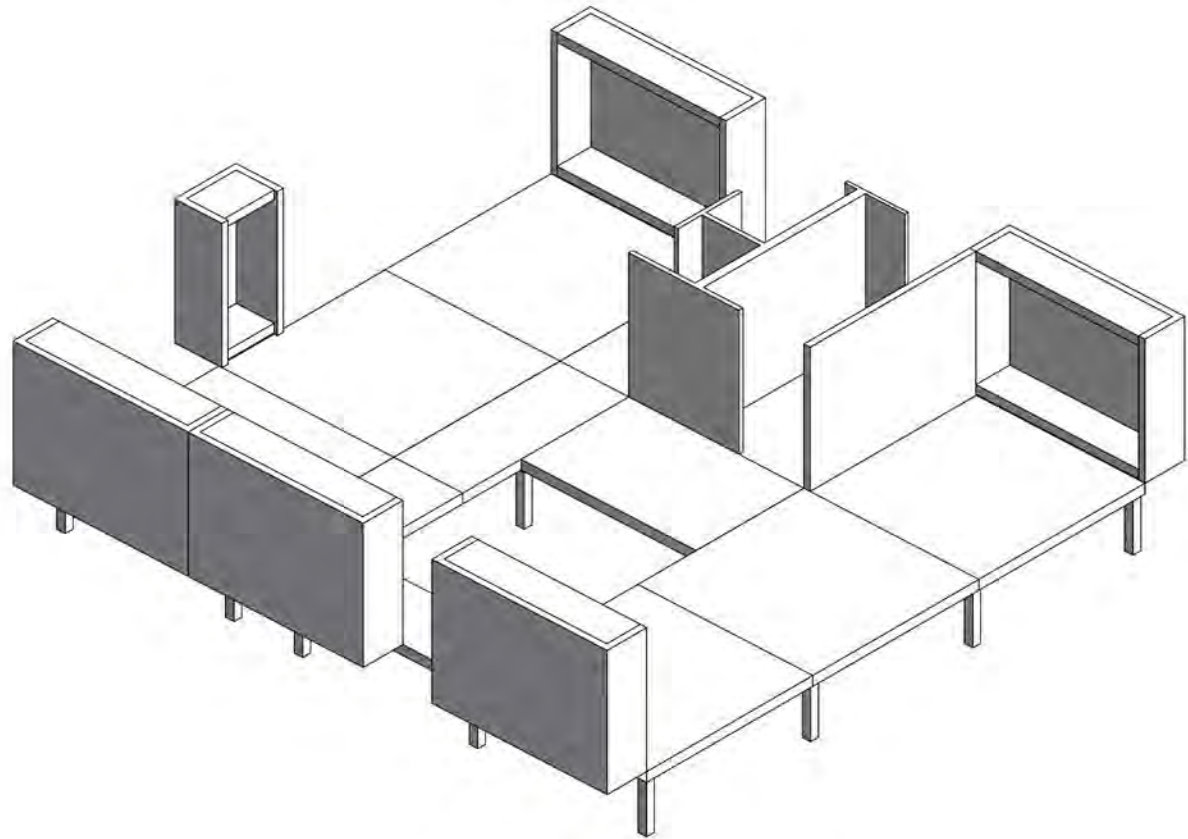
14' x 7' x 8' PREFABRICATED
SERVICE CUBICAL, BROUGHT BY
FLAT BED TRUCK, TOGETHER
WITH KITCHEN FLOOR, WHICH IS
HINGED TO SERVICE CUBICAL,
ARE LOWERED OVER 4 PILES.



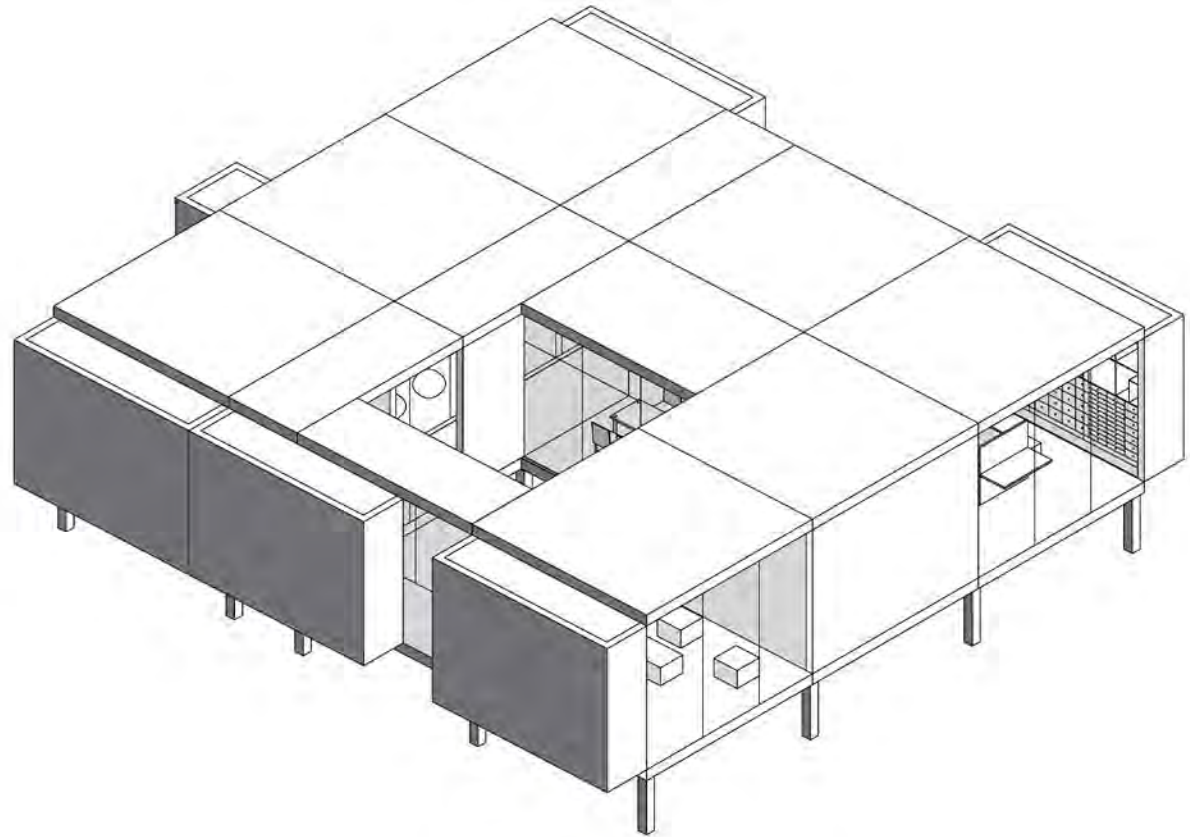
FLOOR PANELS ARE CONNECTED
TO PILES AND TO THEMSELVES.



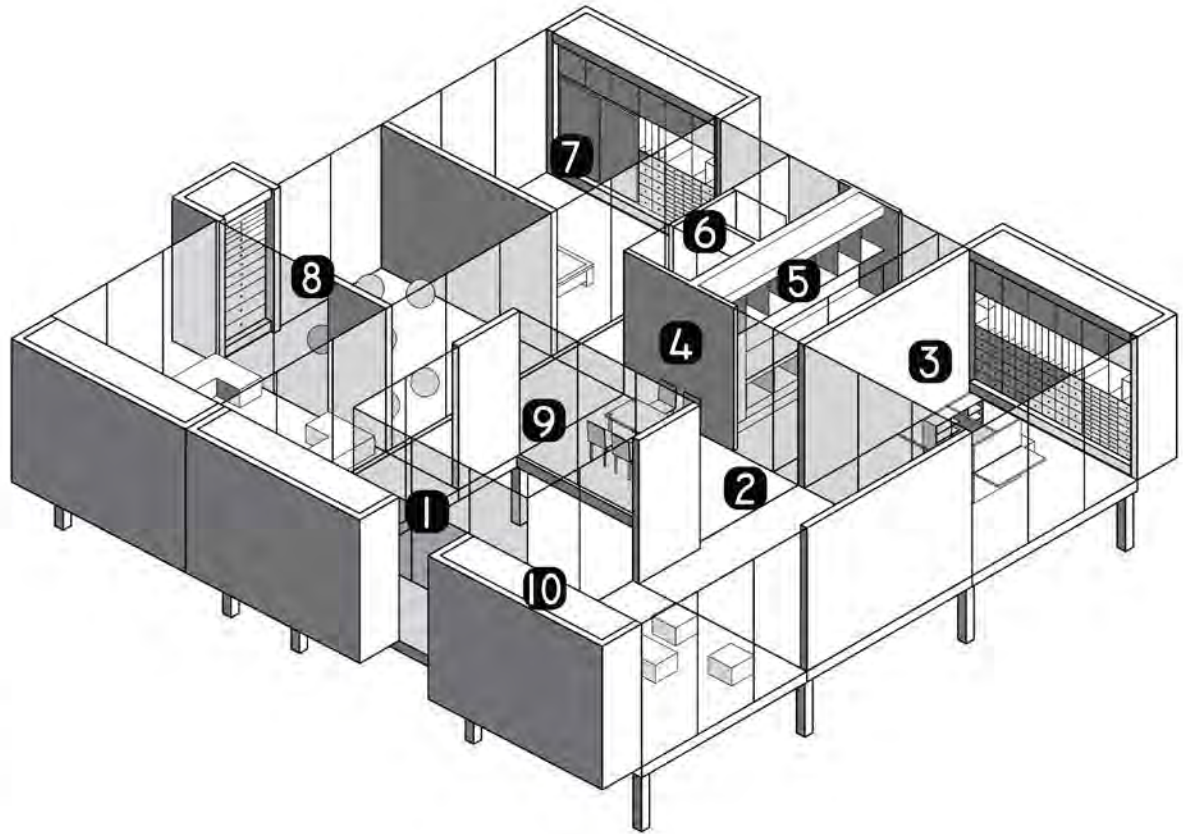
STRUCTURAL PANELS AND
STRUCTURAL CABINETS ARE
CONNECTED TO FLOOR PANELS
AND KEPT TEMPORARILY ERECT
BY TEMPORARY BRACES (NOT
SHOWN).



ROOF PANELS ARE CONNECTED TO STRUCTURAL CABINETS, STRUCTURAL WALLS AND TO EACH OTHER. NONSTRUCTURAL EXTERIOR WALLS (TRANSPARENT OR OPAQUE), INTERIOR WALLS, CABINET DOORS ARE INSTALLED INTO TRACKS OF PANEL EDGES.



1. ENTRY HALL
2. LIVING AREA
3. STUDY/LIBRARY
OR LIVING AREA EXTENSION
4. DINING AREA
5. KITCHEN
6. BATHROOM
7. BEDROOM
8. CHILDREN'S ROOM
OR LIVING AREA EXTENSION
9. EXTERIOR COURT-GARDEN
10. STRUCTURAL CABINET





FLUXHOUSE_ENTRY HALL

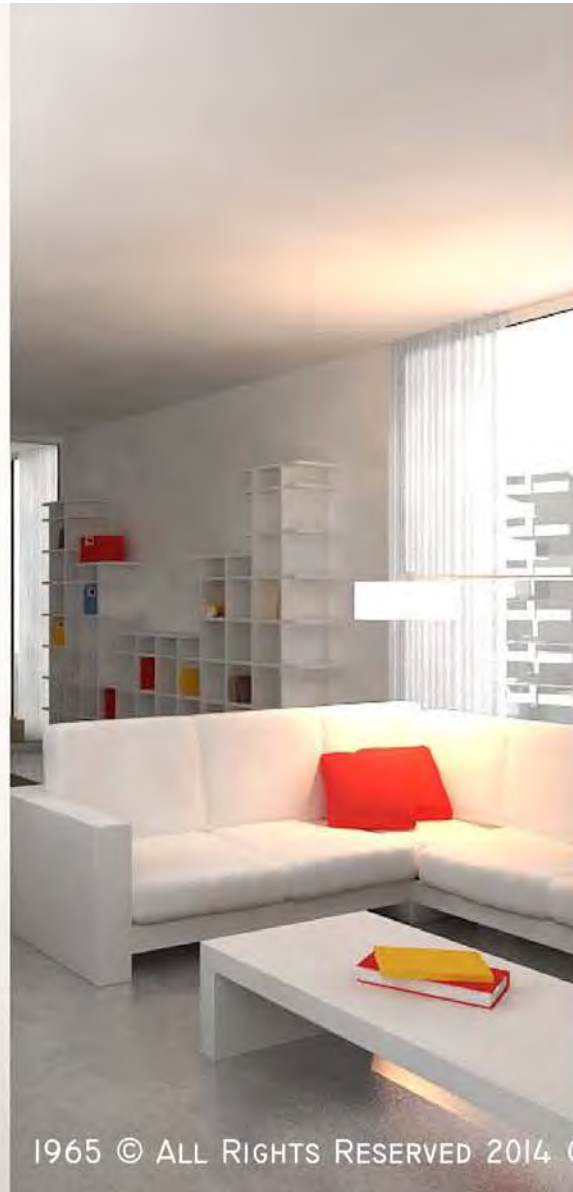
1965 © ALL RIGHTS RESERVED 2014 GEORGE MACIUNAS FOUNDATION INC.



LIVING AREA

**392.00 SQUARE FEET
36.42 SQUARE METERS**





FLUXHOUSE_LIVING AREA

1965 © ALL RIGHTS RESERVED 2014 GEORGE MACIUNAS FOUNDATION INC.

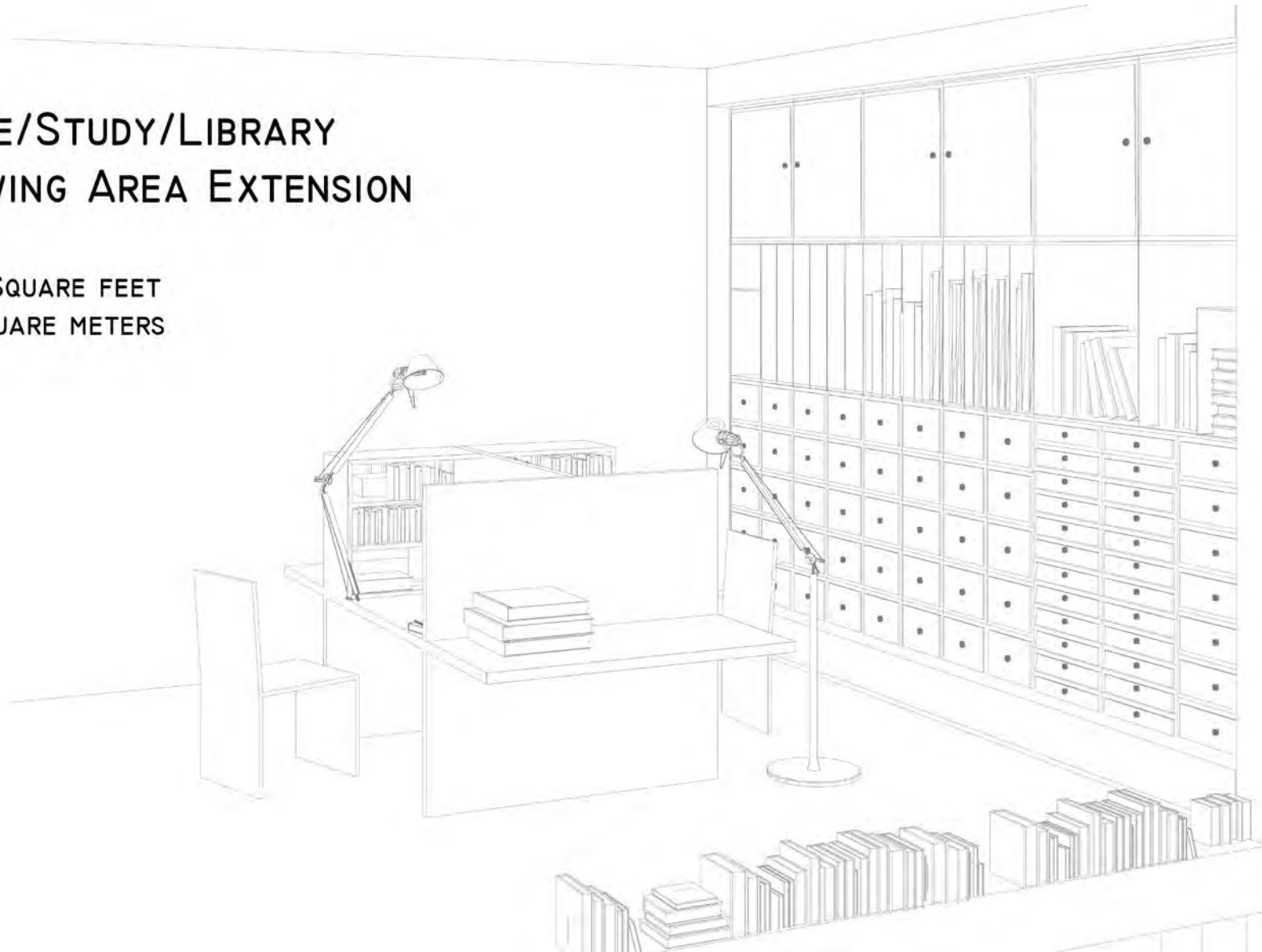


FLUXHOUSE_LIVING AREA

1965 © ALL RIGHTS RESERVED 2014 GEORGE MACIUNAS FOUNDATION INC.

OFFICE/STUDY/LIBRARY OR LIVING AREA EXTENSION

196.00 SQUARE FEET
18.21 SQUARE METERS







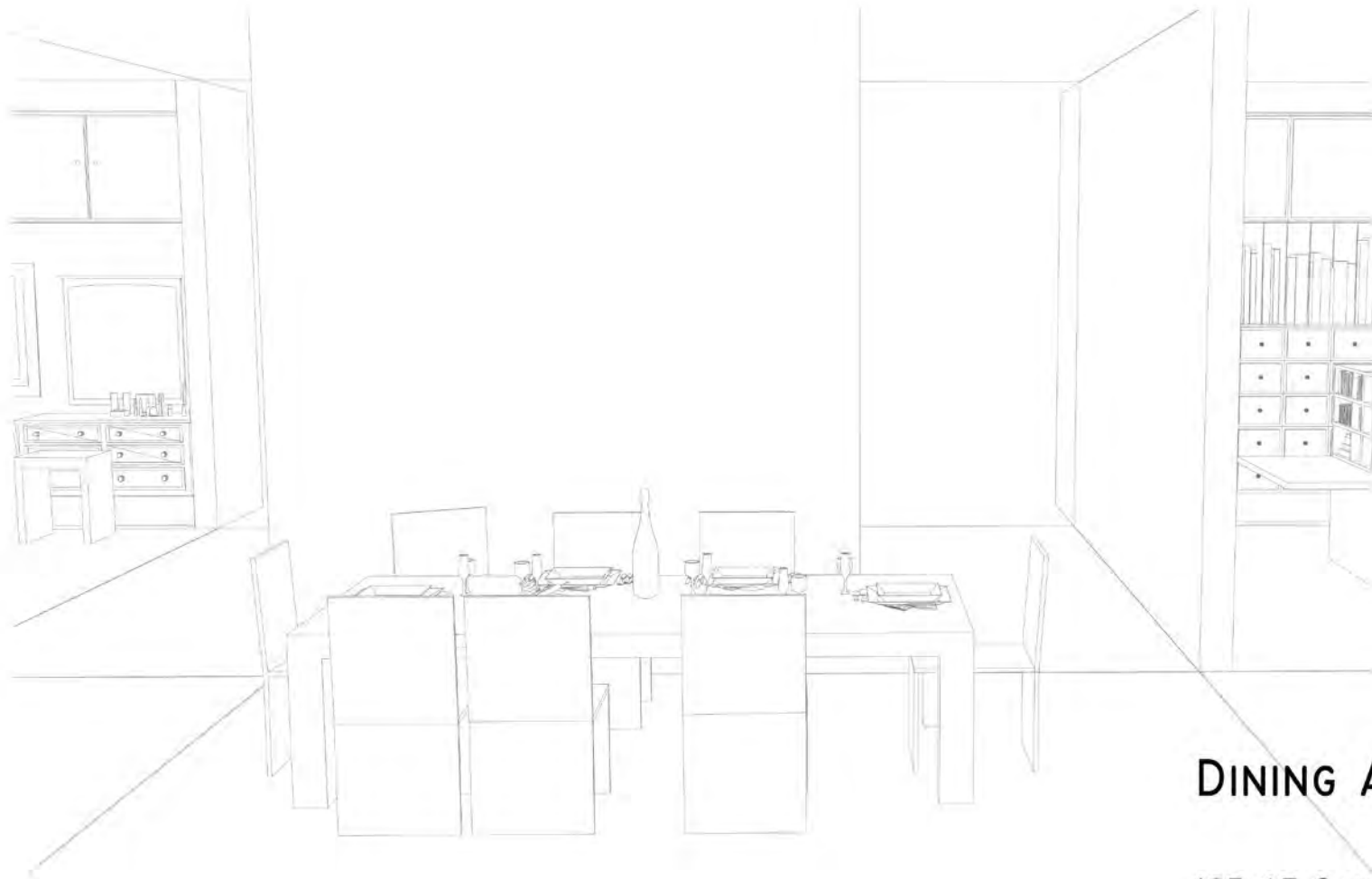
FLUXHOUSE_OFFICE/STUDY/LIBRARY OR LIVING AREA EXTENSION

1965 © ALL RIGHTS RESERVED 2014 GEORGE MACIUNAS FOUNDATION INC.



FLUXHOUSE_DINING AREA

1965 © ALL RIGHTS RESERVED 2014 GEORGE MACIUNAS FOUNDATION INC.



DINING AREA

123.67 SQUARE FEET
11.49 SQUARE METERS



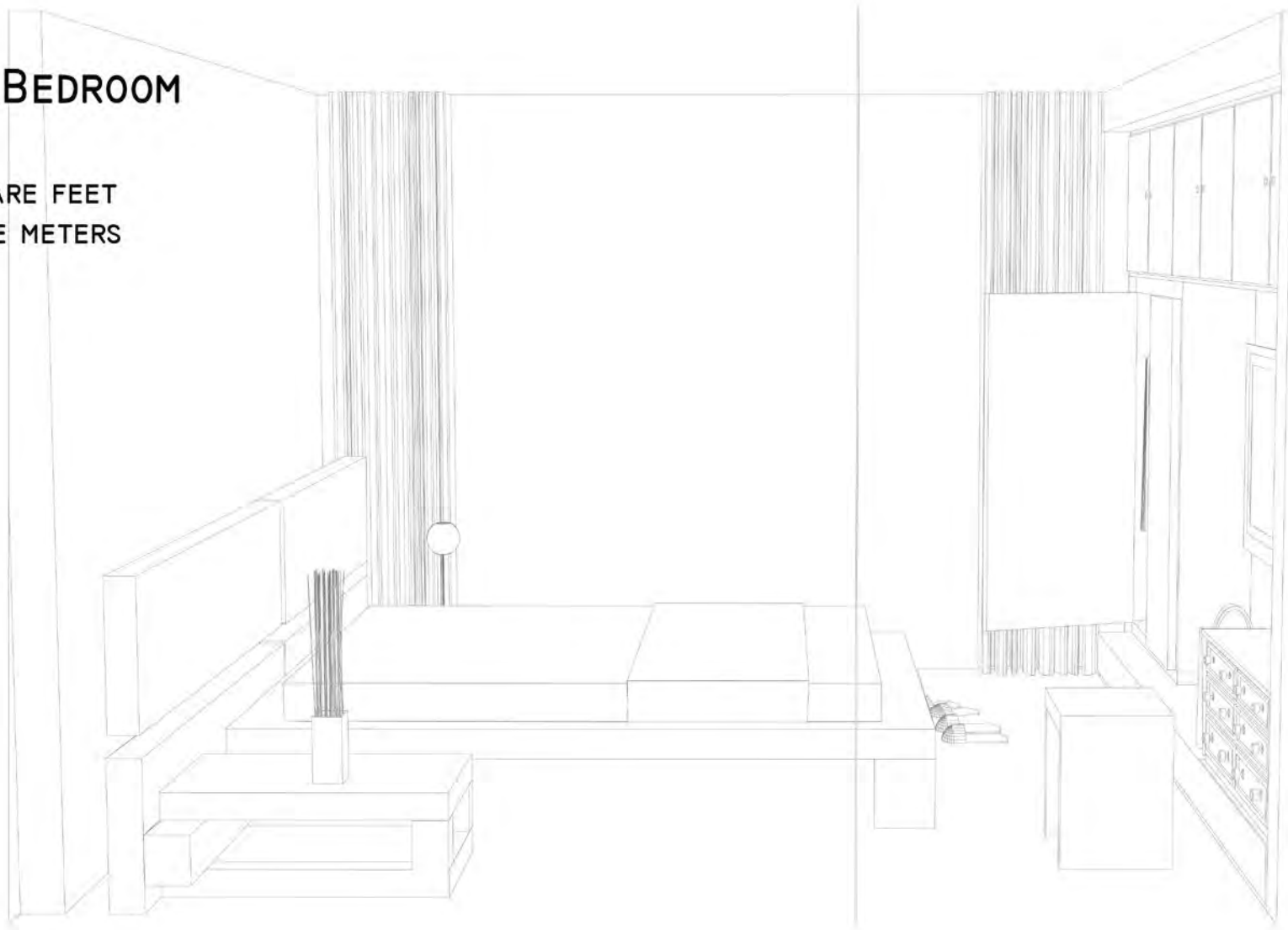


FLUXHOUSE_KITCHEN

1965 © ALL RIGHTS RESERVED 2014 GEORGE MACIUNAS FOUNDATION INC.

MASTER BEDROOM

196.00 SQUARE FEET
18.21 SQUARE METERS







FLUXHOUSE_MASTER BEDROOM

1965 © ALL RIGHTS RESERVED 2014 GEORGE MACIUNAS FOUNDATION INC.

CHILDREN'S ROOM OR LIVING AREA EXTENSION

392.00 SQUARE FEET
36.42 SQUARE METERS







FLUXHOUSE_CHILDREN'S ROOM OR LIVING AREA EXTENSION

1965 © ALL RIGHTS RESERVED 2014 GEORGE MACIUNAS FOUNDATION INC.



FLUXHOUSE_CHILDREN'S ROOM OR LIVING AREA EXTENSION

1965 © ALL RIGHTS RESERVED 2014 GEORGE MACIUNAS FOUNDATION INC.

EXTERIOR COURT-GARDEN

196.00 SQUARE FEET
18.21 SQUARE METERS







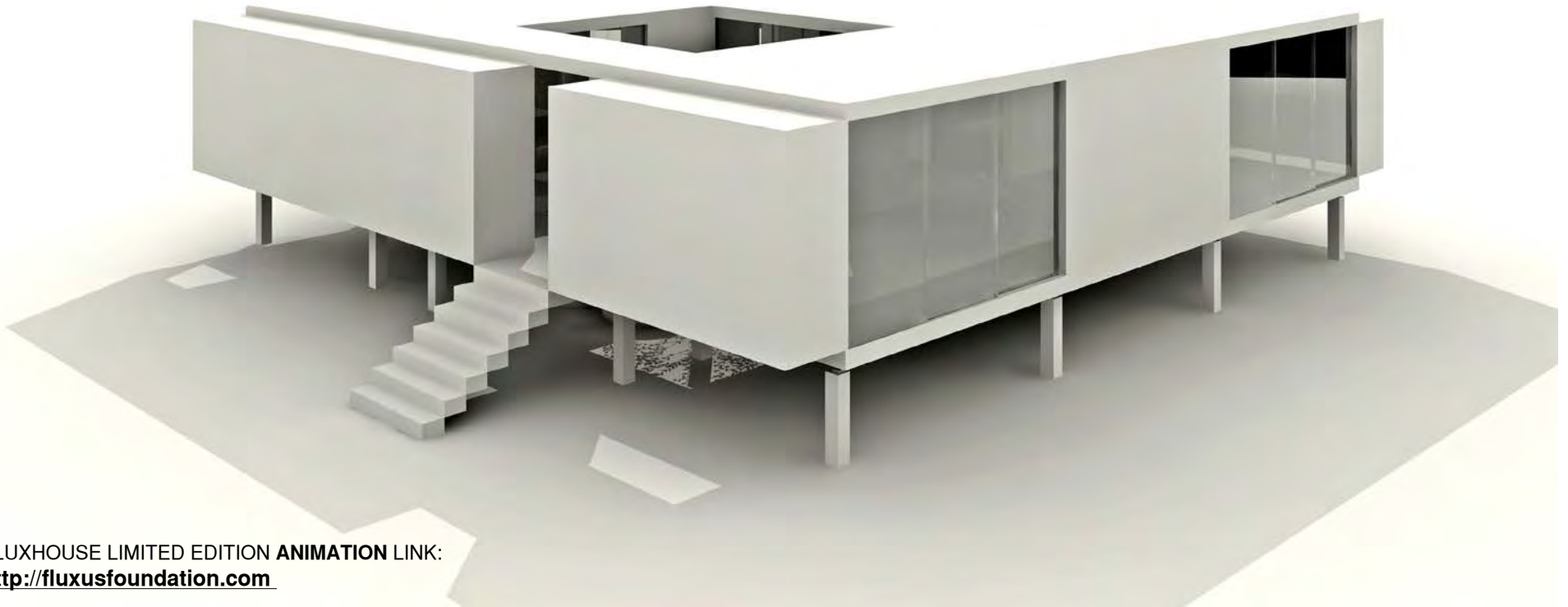
FLUXHOUSE_ENTRY HALL

1965 © ALL RIGHTS RESERVED 2014 GEORGE MACIUNAS FOUNDATION INC.



FLUXHOUSE_EXTERIOR COURT-GARDEN

1965 © ALL RIGHTS RESERVED 2014 GEORGE MACIUNAS FOUNDATION INC.



FLUXHOUSE LIMITED EDITION **ANIMATION LINK:**
<http://fluxusfoundation.com>

George Maciunas Foundation Inc. /dba Fluxus Foundation

454 West 19th st, New York, NY 10011
(212) 675-4392 | info@fluxusfoundation.com

<http://www.fluxusfoundation.com>
<http://www.georgemaciunas.com>

1965©All Rights Reserved
2014 George Maciunas Foundation Inc.